

LIGHT UP THE
DARKNESS!

WIRE & LED LIGHTING

INDOOR | OUTDOOR LIGHTS

PRICE LIST CUM CATALOGUE | OCT 2022





ALEMAC
PRODUCT

LED PANEL LIGHT

LED Panel lights creates aesthetics with better uniform illuminations in various interior places.





ALEMAC
PRODUCT

INDOOR LED LIGHTING

ALANZO LED PANEL LIGHT CASTING SQUARE



Code	Watts	Rate Per Pc.
AE-001	3W	460.00
AE-002	6W	725.00
AE-003	15W	950.00
AE-004	22W	1375.00

LED PANEL LIGHT CASTING ROUND



Code	Watts	Rate Per Pc.
AE-005	3W	460.00
AE-006	6W	725.00
AE-007	15W	950.00
AE-008	22W	1375.00

ALANZO LED SURFACE PANEL LIGHT SQUARE



AE-009	3W	675.00
AE-010	6W	950.00
AE-011	15W	1080.00
AE-012	22W	1890.00

LED SURFACE PANEL LIGHT ROUND



AE-013	3W	675.00
AE-014	6W	950.00
AE-015	15W	1080.00
AE-016	22W	1890.00

ARTINO LED PC PANEL LIGHT SQUARE



AE-017	9W	675.00
AE-018	15W	975.00
AE-019	22W	1300.00

LED PC PANEL LIGHT ROUND



AE-020	9W	675.00
AE-021	15W	975.00
AE-022	22W	1300.00

ACURA LED PC PANEL LIGHT SQUARE



AE-023	8W	525.00
AE-024	15W	775.00
AE-025	22W	1000.00

LED PC PANEL LIGHT ROUND



AE-026	8W	525.00
AE-027	15W	775.00
AE-028	22W	1000.00



ALEMAC
PRODUCT

Code Watts Rate Per Pc.

ALME

LED PC PANEL LIGHT SQUARE



AE-029	8W	525.00
AE-030	15W	775.00
AE-031	22W	1000.00

Code Watts Rate Per Pc.

LED PC PANEL LIGHT ROUND



AE-032	8W	525.00
AE-033	15W	775.00
AE-034	22W	1000.00

ARTINO

HONEYBEE ROUND



AE-035	10W	660.00
AE-036	18W	875.00
AE-037	24W	1200.00

MOONLIGHT ROUND



AE-038	10W	660.00
AE-039	18W	875.00
AE-040	24W	1200.00

ARTINO

BUTTON LIGHT



AE-041	2W	175.00
--------	----	--------

STRIKER LIGHT



AE-042	5W	275.00
--------	----	--------

ARTINO

MOON STRIKER LIGHT



AE-043	5W	275.00
--------	----	--------

T5 FITTING



AE-089	20W	590.00
AE-090	10W	475.00
AE-091	5W	400.00



ALEMAC
PRODUCT

INDOOR LED LIGHTING

Code Watts Rate Per Pc.

ARTINO

JUNCTION BOX LIGHT



AE-044	3W	190.00
--------	----	--------

Code Watts Rate Per Pc.

JUNCTION BOX LIGHT



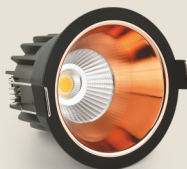
AE-045	6W	390.00
--------	----	--------

ARTINO

COB MOVABLE SPOT LIGHT



AE-046	3W	675.00
AE-047	7W	1050.00
AE-048	12W	1525.00
AE-049	15W	1925.00



COB SPOT LIGHT

AE-050	4W	1175.00
AE-051	8W	1775.00
AE-052	12W	2025.00

AVAILABLE REFLECTOR COLOUR



Silver Nickel Black Gold Rose Gold

ARTINO

FRAMELESS PANEL LIGHT SQUARE



AE-053	10W	875.00
AE-054	18W	1125.00



AE-055	10W	875.00
AE-056	18W	1125.00

FRAMELESS PANEL LIGHT ROUND

ARTINO

RIMLESS DOWNLIGHT SQUARE



AE-057	8W	1400.00
AE-058	12W	1550.00
AE-059	18W	1975.00
AE-060	24W	2525.00



AE-061	8W	1400.00
AE-062	12W	1550.00
AE-063	18W	1975.00
AE-064	24W	2525.00

RIMLESS DOWNLIGHT ROUND



ALEMAC
PRODUCT

PGB COLOUR PANEL LIGHT

Brighten your world with PGB Colour light





ALEMAC
PRODUCT

INDOOR LED LIGHTING

Code Watts Rate Per Pc.

ARTINO

DOUBLE COLOUR PANEL LIGHT SQUARE



AE-065	3+3W	775.00
AE-066	6+3W	1000.00
AE-067	12+4W	1500.00

Code Watts Rate Per Pc.

DOUBLE COLOUR PANEL LIGHT ROUND



AE-068	3+3W	775.00
AE-069	6+3W	1000.00
AE-070	12+4W	1500.00

ARTINO

DOUBLE COLOUR SURFACE LIGHT SQUARE



AE-071	3+3W	1000.00
AE-072	6+3W	1200.00
AE-073	12+4W	1750.00

DOUBLE COLOUR SURFACE LIGHT ROUND



AE-074	3+3W	1000.00
AE-075	6+3W	1200.00
AE-076	12+4W	1750.00

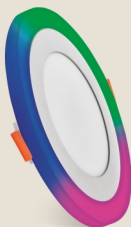
ARTINO

PGB COLOUR PANEL LIGHT SQUARE



AE-077	3+3W	825.00
AE-078	6+3W	1125.00
AE-079	12+4W	1625.00

PGB COLOUR PANEL LIGHT ROUND



AE-080	3+3W	825.00
AE-081	6+3W	1125.00
AE-082	12+4W	1625.00

ARTINO

PGB COLOUR SURFACE LIGHT SQUARE



AE-083	3+3W	900.00
AE-084	6+3W	1300.00
AE-085	12+4W	1825.00

PGB COLOUR SURFACE LIGHT ROUND



AE-086	3+3W	900.00
AE-087	6+3W	1300.00
AE-088	12+4W	1825.00



ALEMAC
PRODUCT

STREET LIGHT WITH LENS

Street lights are designed to fulfil the lighting applications of City Road Lighting and Urban Landscape Lighting.





ALEMAC
PRODUCT

OUTDOOR LED FITTINGS

Code Watts Rate Per Pc.

STREET LIGHT WITH LENS



AE-501	18W	1875.00
AE-502	24W	1875.00
AE-503	36W	2750.00
AE-504	50W	3575.00
AE-505	100W	7425.00
AE-506	150W	10175.00

Code Watts Rate Per Pc.

LED FLOOD LIGHT WITH LENS



AE-507	50W	3250.00
AE-508	100W	5000.00
AE-509	150W	7500.00

LED FLOOD LIGHT



AE-510	50W	3425.00
AE-511	100W	5500.00
AE-512	150W	7975.00
AE-513	200W	10725.00

FOOTLIGHT



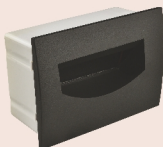
AE-514	3W	1125.00
AE-515	8W	1475.00

FOOTLIGHT



AE-516	3W	925.00
--------	----	--------

FOOTLIGHT



AE-517	5W	1375.00
--------	----	---------

FOOTLIGHT



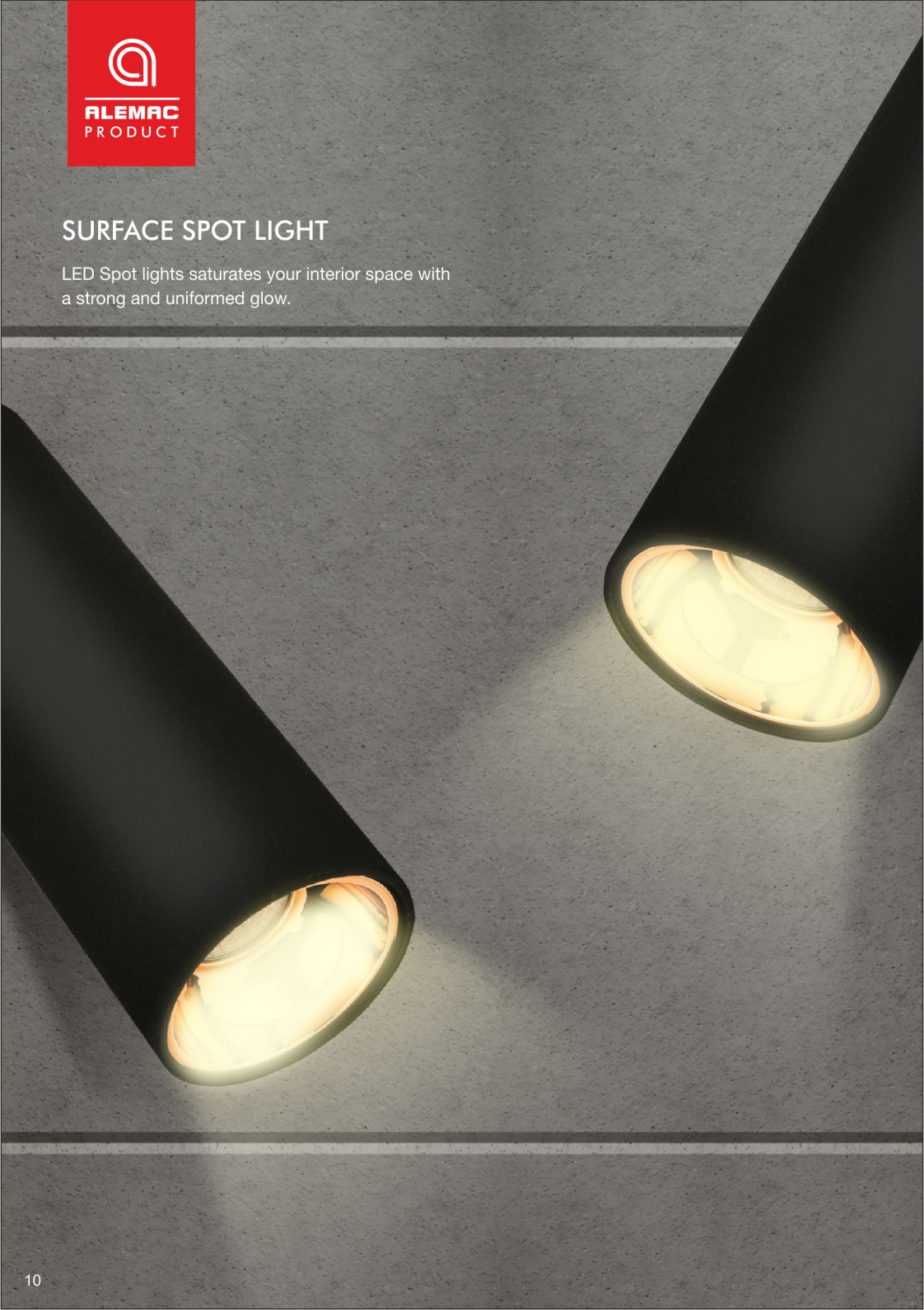
AE-518	5W	1125.00
--------	----	---------



ALEMAC
PRODUCT

SURFACE SPOT LIGHT

LED Spot lights saturates your interior space with a strong and uniform glow.





ALEMAC
PRODUCT

OUTDOOR LED FITTINGS

Code Watts Rate Per Pc.

K TYPE WALL LIGHT



AE-519	6W	1825.00
AE-520	12W	2125.00

Code Watts Rate Per Pc.

WALL LIGHT 2 WAY



AE-521	10W	2000.00
AE-522	16W	2300.00

WALL LIGHT 4 WAY



AE-523	5W	1975.00
--------	----	---------

WALL LIGHT 4 SIDE



AE-524	5W	2875.00
--------	----	---------

SURFACE SPOT LIGHT



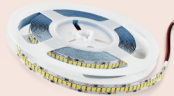
AE-525	8W	2075.00
AE-526	12W	2325.00

SURFACE SPOT LIGHT CYLINDRICAL



AE-527	8W	2075.00
AE-528	12W	2330.00

LED STRIP



AE-529	12W DC 2835/240 LED	310.00
AE-530	12W DC 2835/120 LED	275.00

LED STRIP SMPS



AE-531	12V-2AMP.	375.00
AE-532	12V-5AMP.	525.00
AE-533	12V-10AMP.	850.00
AE-534	12V-15AMP.	1375.00
AE-535	12V-20AMP.	1875.00

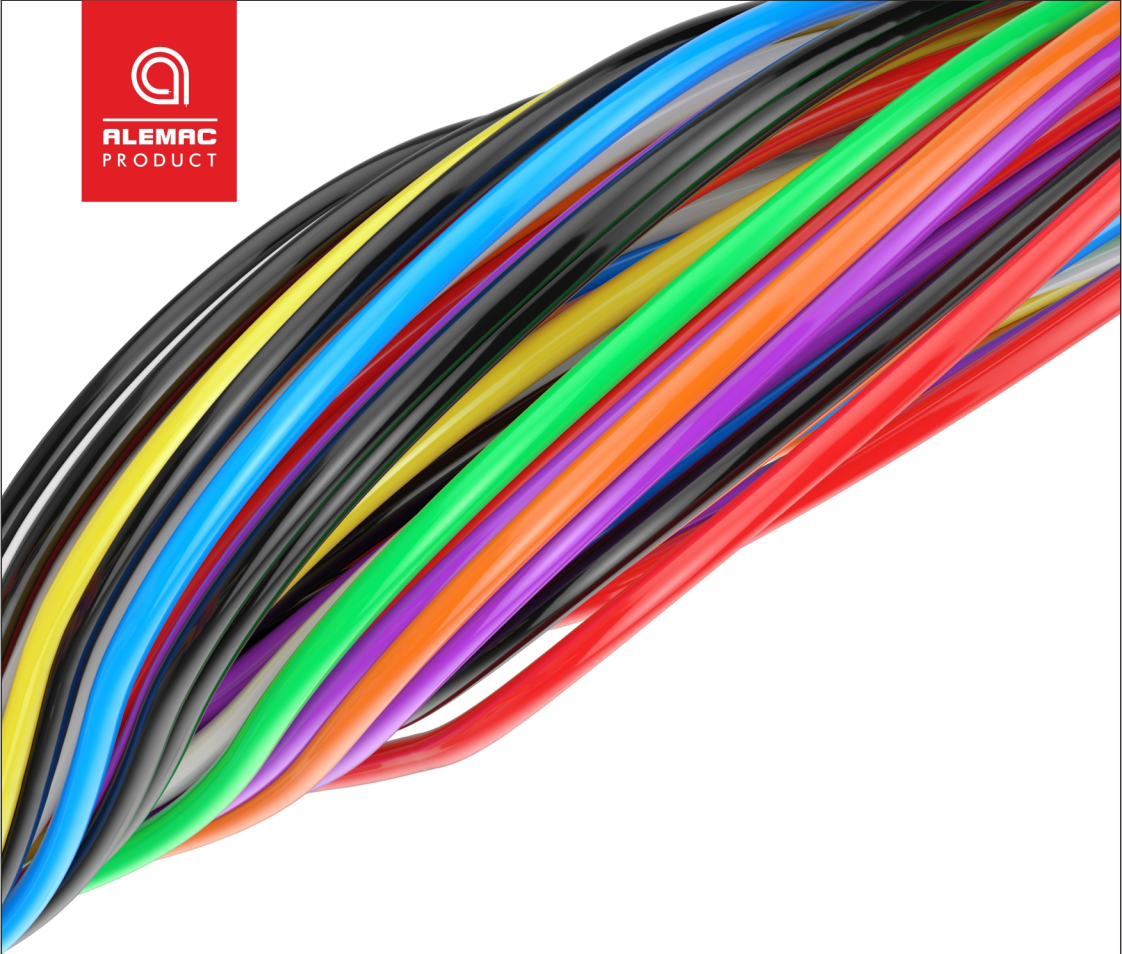


Introducing **WIRES & CABLES**





ALEMAC
PRODUCT



- House Wire
- Building Wire
- Communication Wires
- PVC-Submersible Cable
- Multi Core Round Cable
- Multi-Core Flexible
- Speaker Cable



**TRIPLE LAYER
PROTECTION**

IS:694

CM/L-3082649



ALEMAC
PRODUCT

HOUSE WIRES

FR WIRES

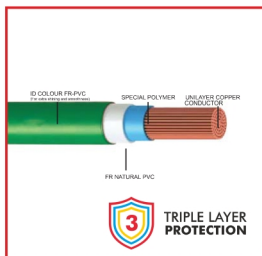
High Deficiency Flame Retardant RoHS Compliant Cable with Unilay Conductor

No Loose Contacts, No Broken Ends, No Sparking & Over Heating

- REACH, RoHS, CE and & CPR Compliant
- 100% Electrolytic copper
- Super Flexibility
- More than 100% Conductivity



Unilayer Core **Technology**



3 Layer **Protection**



Energy Saver

APPLICATION

Suitable for wiring in all types of residential and commercial infrastructure, where fire & electrical safety is utmost important. Also suitable for use in conduit & for fixed. Protected installation particularly suitable for wiring in fire & explosion prone areas, chemical factories, densely wired areas, public buildings, schools, hospitals, commercial complexes & theatres, etc.

BUILDING WIRES

ZHFFR WIRES

Zero Halogen Free Flame Retardant (ZHFFR) 105° Insulation Flame and fire - Do Not Propagate Non Toxic and Non Corrosive

- More than 101% conductivity
- Low acid gas generation
- 100% Electrolytic copper
- High critical oxygen index 100% lead free-Eco friendly



White Smoke



Eco Friendly



Load Capacity

These cables are best for domestic applications, conduit and fixed wiring, protected installations. These cables are ideal for Auditoriums, Hospitals, Hotels, Schools, Stadiums and all constructions for Public usage apart from residential and commercial properties. These cables are best for use in environments where high-performance, reliability and safety is a norm. These cables are also suitable for use in conduit and fixed, protected installation particularly suitable for wiring in fire and explosion prone areas, chemical factories, densely wired areas, public buildings, schools, hospitals, commercial complexes, theatres, etc.



ALEMAC
PRODUCT

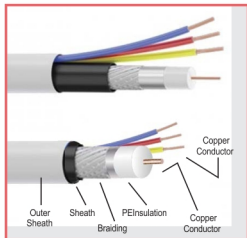
COMMUNICATION WIRES

CCTV WIRE

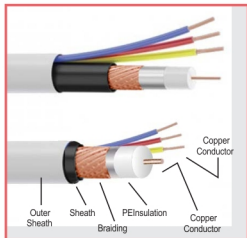
APPLICATION

These cables are specifically designed to transmit complete video frequency with minimum distortion or attenuation for security and surveillance.

This cable is offered in two variants viz., ALLOY BRAIDING (3+1) and COPPER BRAIDING (3+1) CCTV Camera cable.



Alloy Braiding



Copper Braiding



CO-AXIAL

GAS INJECTED PHYSICAL FOAM CO-AXIAL CABLES

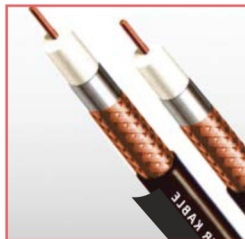
ALEMAC co-axial cables, Rg11 & Drop-RG6/RG59 used for Cable TV networks, are designed for optimum performance and value for money. The arithmetic is very simple. The cables offer higher bandwidth, so your customers can receive the maximum number of channels with a high level of picture and sound quality. This translates to more happy customers, larger cable TV networks and more profits for the cable operators.



Rg 59CCS Conductor

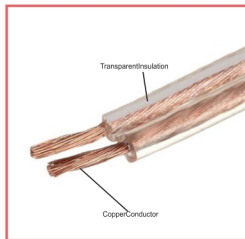


Rg6 Copper Conductor



Rg11 Copper Conductor

SPEAKER CABLES





ALEMAC
PRODUCT

PVC SUBMERSIBLE CABLE

3 CORE FLAT CABLE

APPLICATION

The PVC insulated and sheathed 3 core flat cables are mainly used in pump connections. They are also used in many industrial applications. The sheath is specially made out to resist tough and difficult outdoor conditions & excellent resistant to water.

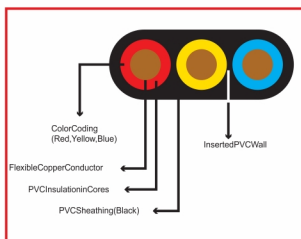
TECHNICAL DATA

Approvals: IS694 marked, FIA/TAC

Conductor: Electrolytic grade annealed copper

Core Colour: Red, yellow (center core), blue

Sheath Color: Black

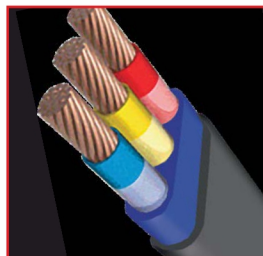
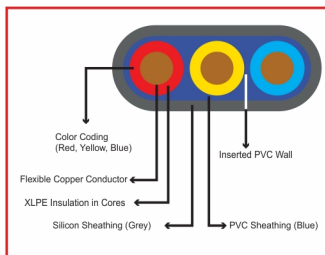
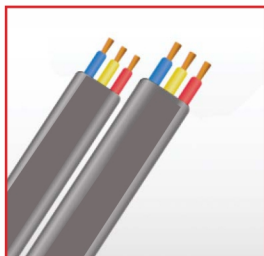


XLPE SILICON 3 CORE

APPLICATION

These submersible flat cable are specially designed to provide distinguished tube like structure for the insulated cores. The wall between the cores perfectly separates them from coming in contact with each other and provides better mechanical and electrical strength compared to the traditional submersible flat cables. The knurling on the outer surface makes the cable more durable and provides improve abrasion resistance during handling and installation of these cables.

These cables are mainly used in pump connection. Though they are mainly used to supply power to pumps, they are also used in industrial applications. These cables are specially manufactured keeping in mind the severe, tough and difficult conditions in which they are used.





ALEMAC
PRODUCT

MULTI-CORE FLEXIBLE

ROUND CABLE

Range of Multicore Round Flexible Cable

0.5 Sq mm to 4.0 Sq mm - 1 core to 24 core Multicore Round Flexible Cables
6.0 Sq mm to 50.0 Sq mm 1 core to 4 core Multicore Round Flexible Cables
70.0 Sq mm X 1 core Multicore Round Flexible Cable
95.0 Sq mm X 1 core Multicore Round Flexible Cable
120.0 Sq mm X 1 core Multicore Round Flexible Cable
150.0 Sq mm X 1 core Multicore Round Flexible Cable

FEATURES

Manufactured from bright annealed 99.99% pure bare copper conductors these cables offer low conductor resistance. These wires are insulated with a special grade PVC compound formulated and manufactured in-house. The tough robust outer PVC jacket protects it from the oils, greases, various chemicals and abrasions giving long life and electrical safety

USES

Multicore Cables are very versatile. They can be used in the following areas :
For Control Panels in Heavy Industries. For Heavy Machineries
For Air-condition, Motors Automobile etc.

Single Core/Multicore Flexible cables as per IS-694/1990 Voltage grade up to 1100 Volts.

Area Sq. mm.		0.50	0.75	1.0	1.5	2.5	4.0	6.0	10.0
No. of Size of Wire (Nom.) No./mm		16/.2	24/.2	32/.2	48/.2 or 30/0.25	80/.2 or 50/0.25	56/.3	84/.3	140/0.3 or 80/.40
Conductor Resistance (Max.) @20°C Ohm/Km		39.0	26.0	19.5	13.3	7.98	4.95	3.3	1.91
Current Rating Dc/Ac Amp.		4	7	11	13	18	24	31	42
Insulation Thickness (Nom.)mm		0.6	0.6	0.6	0.6	0.7	0.8	0.8	1.0
Single Core Unsheathed O.D. (Approx. mm)		2.25	2.40	2.60	2.90	3.65	4.35	5.00	6.40
Single Core Sheathed 1 Core	Sheath Thickness (Nom.) mm	0.9	0.9	0.9	0.9	1.0	1.0	Multicore Flexible cables above 4 Sq.mm. are not covered by IS:694	
	Overall Diameter (Approx.)mm	4.10	4.25	4.50	4.80	5.70	6.30		
2 Core	Sheath Thickness (Nom.) mm	0.9	0.9	0.9	0.9	1.0	1.0		
	Overall Diameter (Approx.)mm	6.20	6.60	7.00	7.50	8.90	10.30		
3 Core	Sheath Thickness (Nom.) mm	0.9	0.9	0.9	0.9	1.0	1.0	1.1	
	Overall Diameter (Approx.)mm	6.50	6.90	7.30	7.90	9.50	11.00	12.40	
4 Core	Sheath Thickness (Nom.) mm	0.9	0.9	0.9	1.0	1.0	1.0	1.4	
	Overall Diameter (Approx.)mm	7.20	7.60	8.00	8.80	10.20	11.90	13.80	



ALEMAC
PRODUCT

ARTINO®

Modular Series

Art & Innovation!

Classic white modular switches are effective installation for homes and offices that came with standard fittings. To uplift the ambience and décor, Artino switches were designed.



OUR MODULAR SERIES

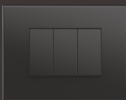
Our product profile ranges from conventional to modular in series and variety, which is enable to enhance facilitation of comfort in routine life.

ARTINO SERIES

ARTINO®



Eco White



Black



Graphite



Wenge Wood



Walnut Wood



Rose Wood

ACURA®

ALANZO®



Silver



Copper



Eco White



Black



Graphite



Eco White

GLASS COLLECTION

METAL COLLECTION

CERAMIC COLLECTION



Ash Mark



Stone Mark



Metallic Silver



Metallic Black



Ocean Blue



Satin Black



Silver Line

AXOR SERIES



PLATINA
switches



ARTIZ®
modular frames



AEGIS
modular frames



IVALO
modular



A+
CHARGE



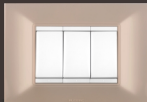
A+
ROUND

A+ SERIES

ALME SERIES



ALME
modular



ARISTO
frames



POLO+
switches



ASTER+
switches



ALEMAC Electrical Pvt. Ltd.
Gogate Wadi, Off Aarey Road,
Goregaon (E), Mumbai - 400 063.
Customer Care Executive No.: +91 98692 44960
Email: contact@alemacswitches.com
For BIS Certification detail see website: www.bis.org.in
www.alemacswitches.com

Authorized Dealer / Distributor